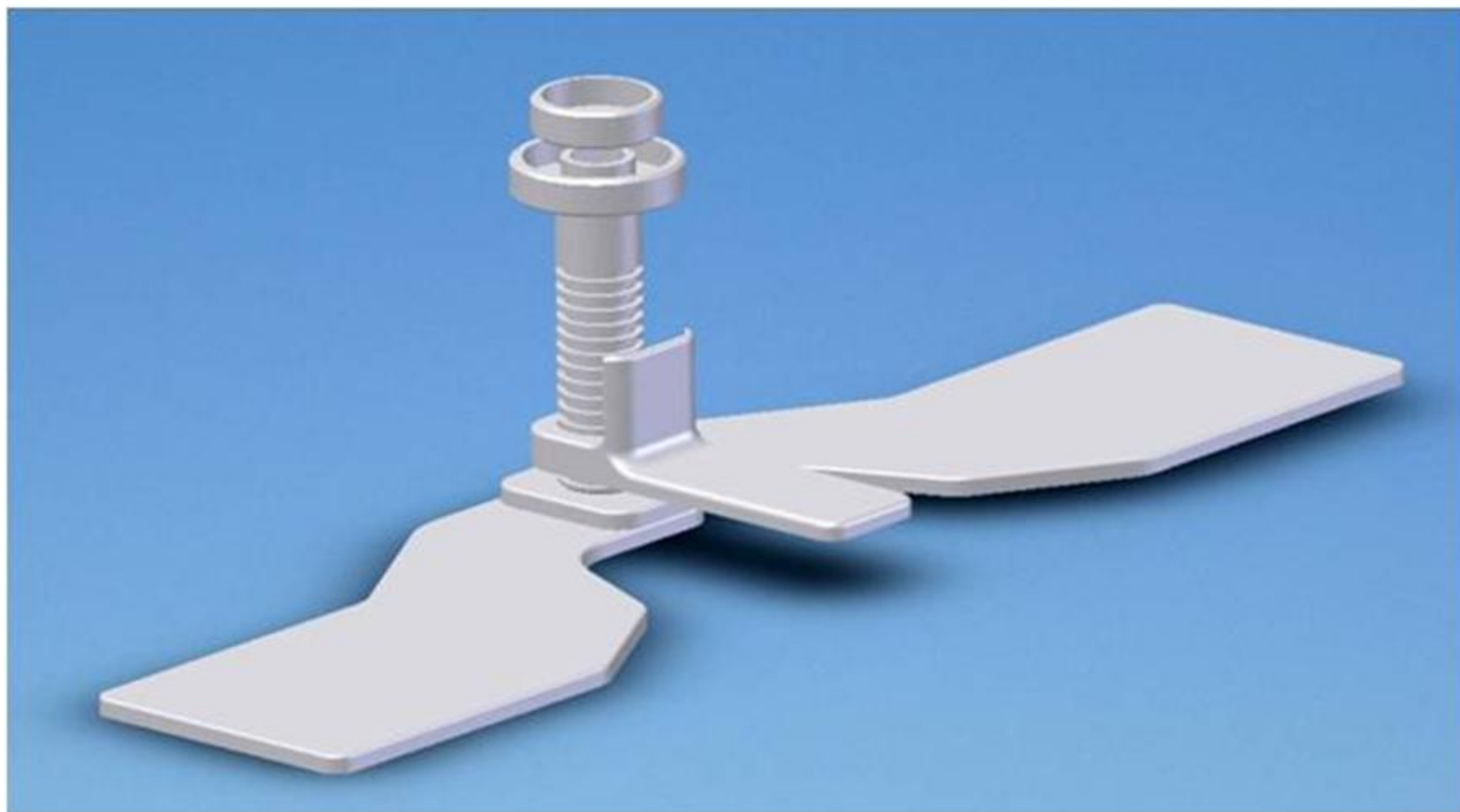
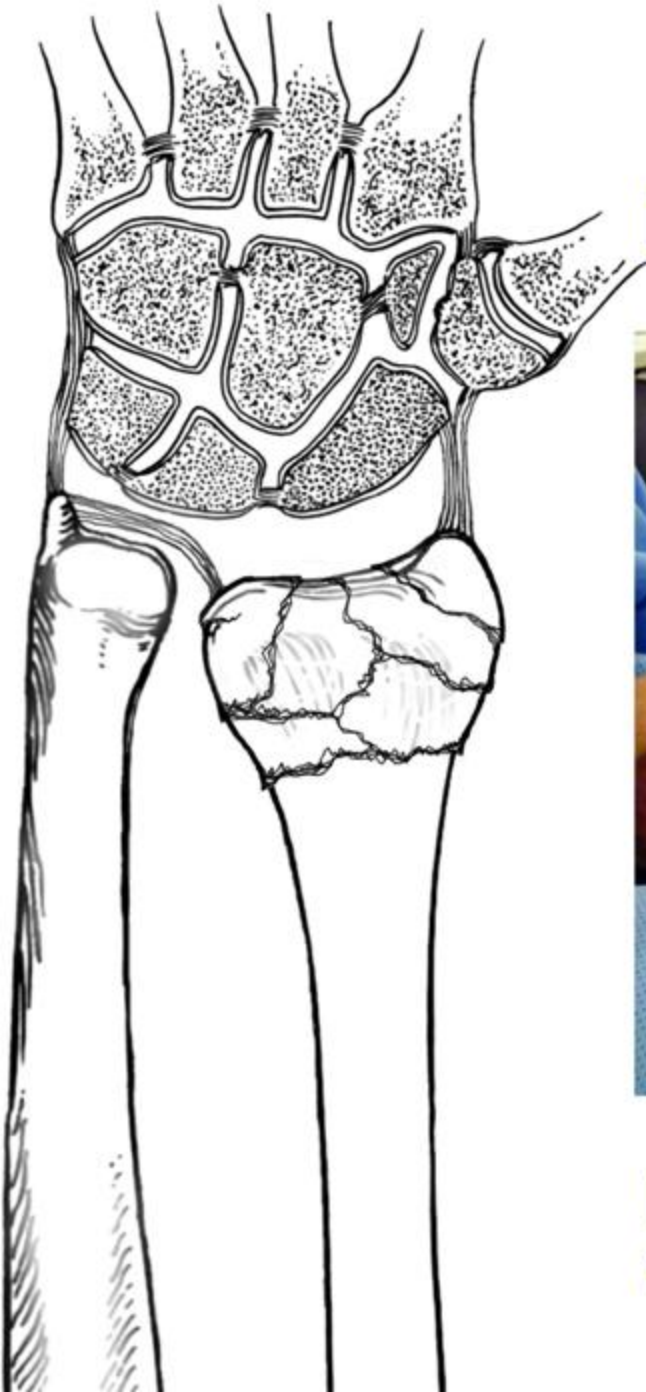


# The First Assistant Wrist Reduction Device



# STEP 0

## Impacted Comminuted Fracture



Begin by wrapping the hand and arm  
to the **WRIST REDUCTION DEVICE...**

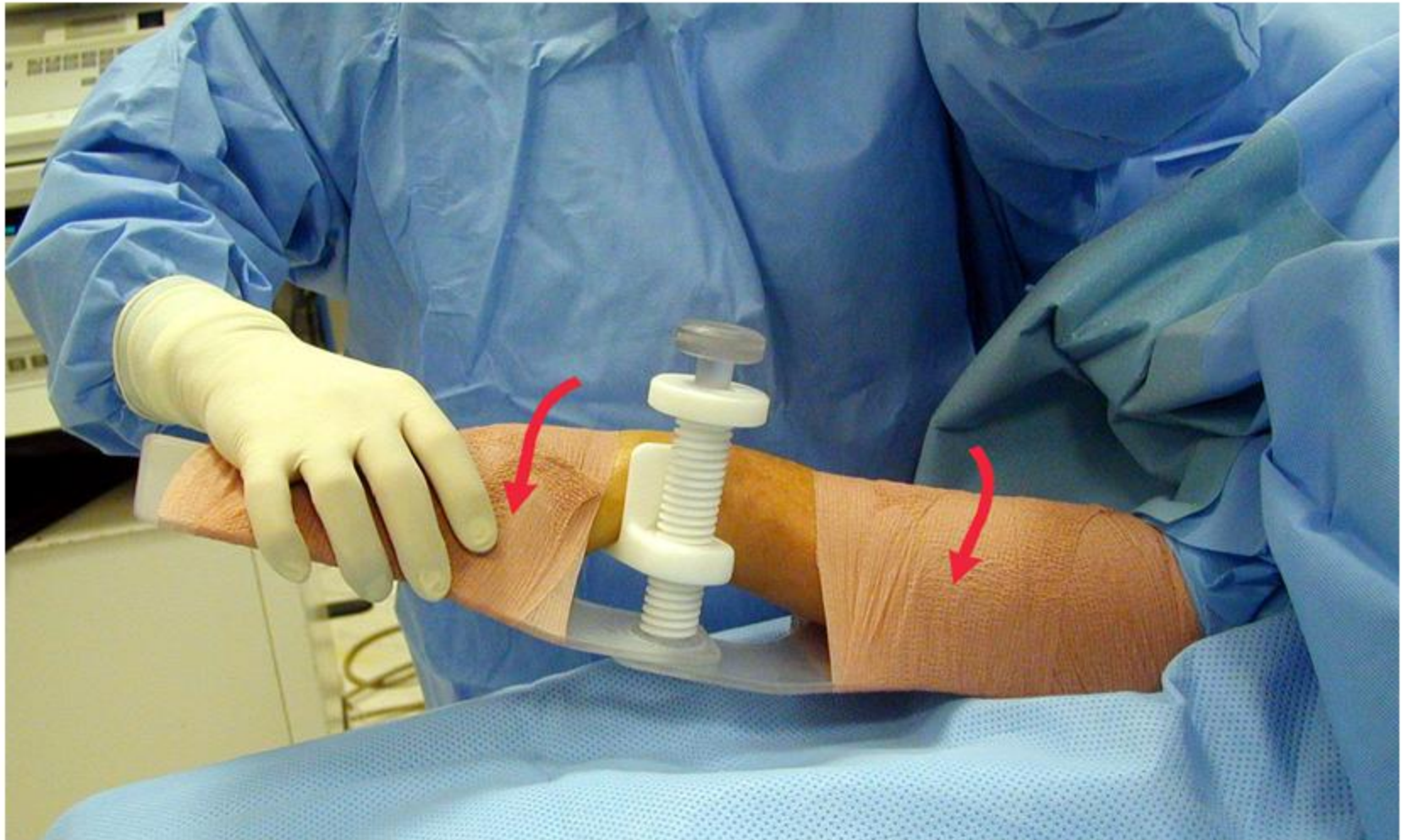
# Securing the Arm and Wrist



# Adjust Angle and Lift for Reduction



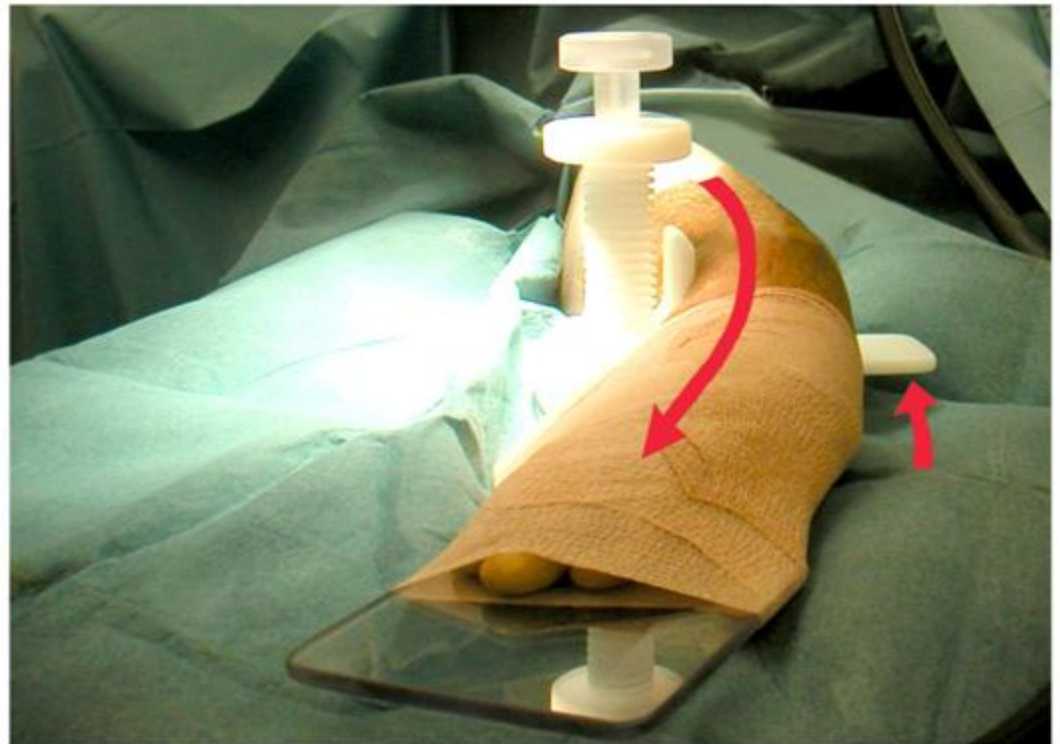
# Reduction Completed





# STEP 1

1. Reduce the fracture of the distal radius by Ligamentotaxis using the Wrist Reduction Device by ulnar deviation of the hand and elevation of proximal fragment. Check the reduction under fluoroscopy. Wrist Reduction Device will hold the hand and arm in that position throughout the surgery.



# Full Reduction AP View



# Full Reduction Lateral View

